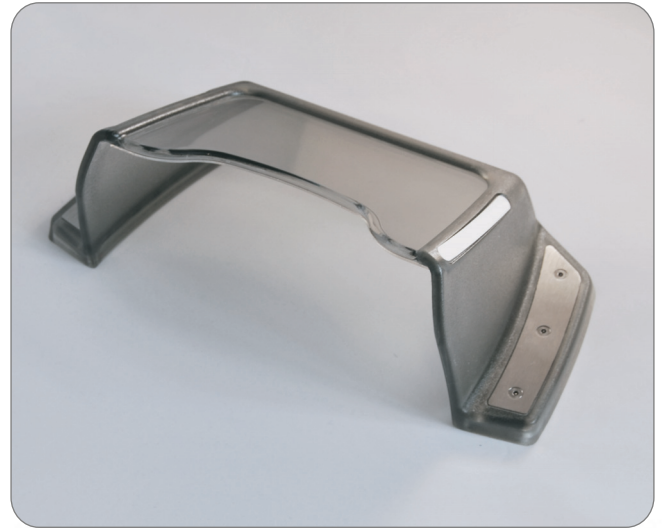


IN THE BOX

- EVO3i PINGuard
- Fitting Template
- Surface cleaning sachets
- Surface Primer
- Fitting key
- Instruction manual

EVO3i



DESCRIPTION

The EVO3i was launched due to increasing criminal attacks using pinhole/spy cameras fitted to ATM fascias and surroundings which record the user entering their PIN. The unique patented polarising lens was developed specifically for the EVO3i. Instead of blurring the image, the Lens polarises the image by actually blocking the light particles from reaching a device fitted onto the ATM fascia, while allowing the user to view the PIN pad clearly. The EVO3i is interchangeable with the EVO3, allowing for upgrading or tailoring of security requirements.

FEATURES

- Ergonomically designed to help disabled users
- Polarised lens (protects against pinhole camera attacks)
- Retro fitted in minutes
- Fits almost any ATM cash machine
- Made from highly durable fire retardant shatterproof polycarbonate
- No drilling or physical fixings required
- All components replaceable

SPECIFICATIONS

Unit size and weight	Width 257mm (10.11in) Height 81mm (3.2in) Depth 152mm (4.69in) Weight 330g (0.7lb)
Unit Packaging size and weight	Width 263mm (10.35in) Length 220mm (8.66in) Height 85mm (3.35in) Weight 0.8kg (1.8lb)
Carton Size and weight (10 off)	Width 450mm (17.72in) Length 273mm (10.75in) height 425mm (16.73in) Weight 8kg (17.64lb)

LANGUAGES

Czech, Danish, Dutch, English, Finnish, French, German, Greek, Hungarian, Italian, Japanese, Korean, Maltese, Norwegian, Polish, Portuguese, Russian, Simplified Chinese, Spanish, Swedish, Traditional Chinese and Turkish.

ACCESSORIES

- Replacement upper plates
- Replacement lower set of plates
- Replacement EVO3 body
- Replacement security screws
- Angle reducing spacers
- Cut out for headphone jack
- Curved spacers for Opteva machines
- Side labels printed to customer's requirements
- Optional extra high security screws
- Optional Anti glare lens